



# Image Center Installation

**Operating System-** The Image Center requires Windows 7, 8, 10, Server 2008r2, 2012, or 2012r2. It runs on 64-bit hardware and virtual machines.

## 1. ShowCase Image Center Installer

If you have an installation DVD, locate the Image Center installer (not the ShowCase viewer installer). If you do not have an installation DVD, download an Image Center installer from the Download section of the TriiTech.com web site. Save the installer in a location on your computer that you can easily find again.

## 2. Install the ShowCase Image Center software

Double-click on the installer file (ImageCenterInstaller) to start installation. Your operating system may ask “Do you want to allow the following program to make changes to this computer?”. Click Yes, then follow the prompts for installation.



After you have read and agreed to the licensing agreement the installer runs for several minutes. Additional information dialogs appear during the installation process, but you do not need to respond to these dialogs.

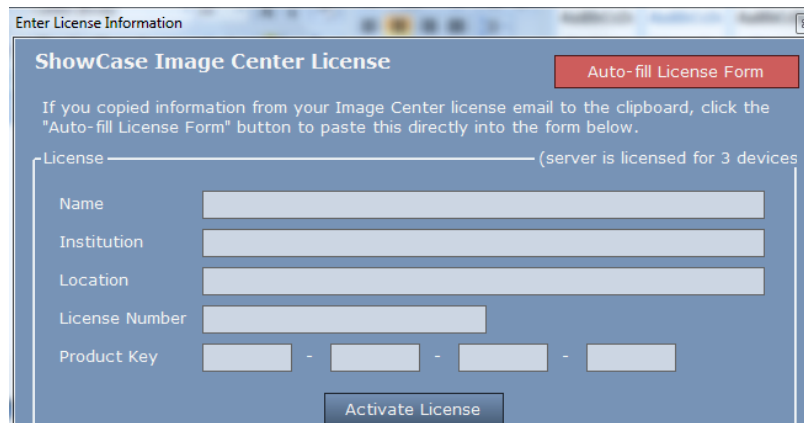
When the installer completes, click the **Finish** button. If you check “Launch ShowCase Image Center”, the Image Center Console appears. It may take 10 to 20 seconds for the Image Center to start up the first time.

## 3. License the Image Center

If you are installing for the first time, the Image Center will start as a 30-day trial:



Click on the **Manage Licenses** button and enter your license information in the dialog that displays



**Tip:** The red “Auto-fill” button makes license entry easy. Copy ALL of the license information from the licensing email you received from Trillium. Then click the “Auto-fill” button to paste all of the information at once.

Click the **Activate License** button. It can take several minutes for your license to activate over the internet. A confirmation dialog appears letting you know that the license was successfully activated. If you have difficulty activating your license contact support@triltech.com.

#### 4. Verify that the Image Center is running

The green indicator at the upper right lets you know all components of the Image Center are running correctly.



If the Image Center is not running properly, the indicator will be yellow or red, and the System Status box should report any problems in the system.

Once your Image Center is up and running for the first time, you will want to consult the Image Center Configuration Guide for information on how to

- Configure the Image Center to receive studies from ultrasound machines and other imaging equipment.
- Add Image Directories (locations where the Image Center will store studies).
- Add system users and designate which image directories they can access.
- Set up a regular time to automatically back up your Image Center settings (Users, Image Directories, and settings, not your data, which should be backed up separately).

**NOTE:** The Image Center runs as several Windows Services in the background. The Console does not have to be running for the Image Center to work. You can dismiss the console window at any time. You do not have to be logged in to your computer for the Image Center to run.