



## ***Migrating from Image Center 1.0 to Image Center 2.0***

---

Image Center 2.0 replaces both Image Center 1.0 *and* ShowCase Connect, combining the best features of both into one piece of software. It has all of the features of 1.0, plus several new features:

**Connect as Windows Service** – The program is no longer actually called “Connect”, it appears in the Windows Services list as “ShowCase Image Center SCP”. It is designed to run even when users are logged out, like a true server.

**Quick Access to Prior Studies** - All studies are available on one tab, through a powerful search mechanism.

**Simplified Data Management** - Image Center 2.0 stores up to 200,000+ studies, or roughly 15,000,000 images. There is no longer a need for archiving to multiple folders as they fill up.

This guide assumes you will be installing Image Center 2.0 on the same machine as Image Center 1.0 and ShowCase Connect.

**Note:** Installing Image Center 2.0 is not a simple uninstall of the old software and installing the new. It requires some configuration and requires that you to manually migrate all of your existing data into the new Image Center. Please read through this entire guide before proceeding.

### **Migration Summary**

1. Plan your disk space needs.
2. Write down your Connect settings.
3. Uninstall Image Center 1.0 and Connect
4. Install and Configure Image Center 2.0, see the Image Center Installation guide.
5. Upgrade ShowCase Viewers to ShowCase Premier 6.0.
6. Migrate your existing studies into Image Center 2.0.

## **Plan Your New Image Center Storage Needs**

Image Center 2.0 stores DICOM files differently than Connect, and cannot use the same folders or Image Directories as Connect or Image Center 1.0. It still has Image Directories, but they are considerably more robust, capable of storing 200,000 studies.

### **How much disk space does the Image Center need?**

A good metric for planning your needs is:

**(Current Connect/ShowCase Storage) + (2 years free space)**

If you're unsure of how much disk space you use in 2 years, you can use the following rough formula:

**150 MB x (# studies/day) x (250 working days/year) x (2 years) = ? MB**

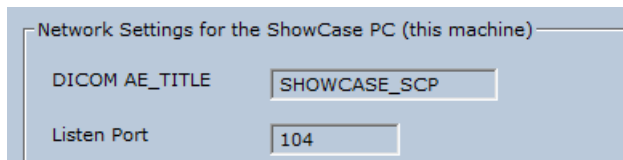
Two years is just a suggestion. You may want to set aside more space. You can get started with very little disk space, but once you start migrating your existing Connect/ShowCase archive data, you will want to make sure you have adequate room on your disk(s).

## A Note On Backup

Image Center 2.0 has the same backup needs as Image Center 1.0 + Connect, i.e. it does not make backups of your data. You will still need to back up the Image Directories and Image Center settings as you have in the past. See the Image Center Administrator's Guide for details.

## Write down your Connect settings

1. In Connect, click the Edit Settings button.
2. Near the bottom of the screen are the AE title and port settings:



3. Write these settings down.
4. Exit Connect

## Uninstall Image Center 1.0 and Connect

Using the Windows Control Panel Programs and Features, uninstall the Image Center 1.0 software and the ShowCase software. Be sure to have written down your Connect settings before you do this. Your Image Center 1.0 settings will be carried over to the new 2.0 install, with one exception – Image Directories are not. Read on for more details.

As a side note – you do not have to re-install the ShowCase viewer on the same machine as the Image Center 2.0, like you've had to do with Connect in the past. You can do this, of course, but if you want to treat the computer like a true server, and put the viewer on another machine, that will work just fine.

## Install and Configure Image Center 2.0

1. Download and install the Image Center using the detailed instructions in the **Image Center Installation** guide.

**Note:** Users and other settings will remain intact from the 1.0 install, but you will notice that there is now only one Image Directory (C:\Image Center Storage), which is installed by default. It is empty.

2. Using the **Image Center Configuration** guide, set up new Image Directories on disks that have enough free space to accommodate the disk space needs you calculated in the “Plan your Image Center storage space” step.

**Note:** you cannot use your existing Connect/ShowCase folders for Image Directories. You have to use fresh, empty folders.

3. When you get to the *Configure DICOM Incoming Studies* portion of the Image Center Installation guide, use the Connect settings that you wrote down earlier, e.g.

Incoming Studies (DICOM SCP)

DICOM AE Title	SHOWCASE_SCP
DICOM Listening Port	104
Store Images To	C:Image Center Data ▼

4. If you have more than one Image Directory, set the “Store Images To” to the Image Directory where you wish your studies to go when they arrive from the ultrasound machines.
5. Test sending a study to the Image Center. If there are problems, follow the guidelines in the Image Center Configuration guide to diagnose the problem.

**Note:** The Image Center stores all your data in native DICOM format inside Image Directory folders, and uses a SQL database to track these files. For this reason it is crucial to **never move or delete files from inside an Image Directory using Windows Explorer or other means.** The only ‘safe’ way to copy or delete files is through the Image Center Console or ShowCase.

## Upgrade ShowCase Viewers to ShowCase Premier 6.0

ShowCase Premier is required for every workstation that wants to access Image Center studies. If you have ShowCase Basic, it will need to be upgraded Premier 6.0. If you have already have ShowCase Premier version 5.x, the upgrade to 6.0 is free, but you will need to upgrade to 6.0 to access Image Center 2.0.

For every computer that currently has ShowCase 5.x on it that is on your LAN:

1. Uninstall ShowCase 5.x.
2. Install ShowCase Premier 6.0.
3. Using the **Configure Premier For Local Image Access** guide, set up an Image Center tab in ShowCase.
4. Verify that you can view the test study you sent to the Image Center.

For every remote computer that currently has ShowCase 5.x on it, accessing over your VPN:

1. Uninstall ShowCase 5.x.
2. Install ShowCase Premier 6.0.
3. Using the **Configure Premier For Remote Image Access** guide, set up an Image Center tab in ShowCase.
4. Verify that you can download and view the test study you sent earlier to the Image Center.

## Migrate your existing data into Image Center 2.0

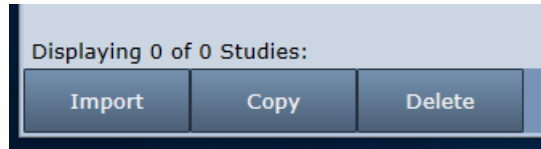
Now that your system is receiving studies from your ultrasound machines and you can view them in ShowCase, it is time to import your old archived data into the Image Center. Most ShowCase customers have several years of data stored in many, many folders – some may be stored to CD/DVD. The following steps apply whether you’re migrating data from hard disks, network shares, or CD/DVD.

Importing DICOM data into the Image Center makes a **copy** of the data, and leaves the original data in place.

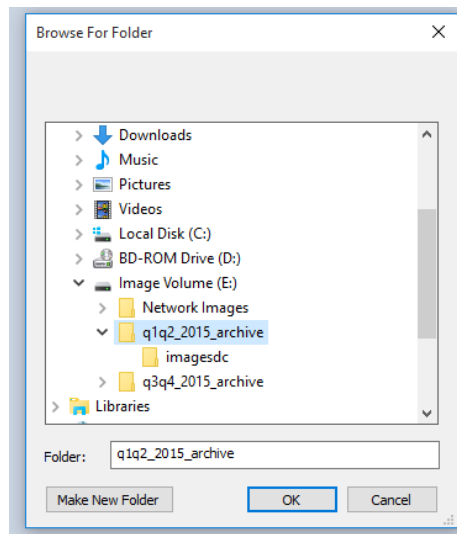
1. Open the Image Center Console and click the **Manage Studies** button.



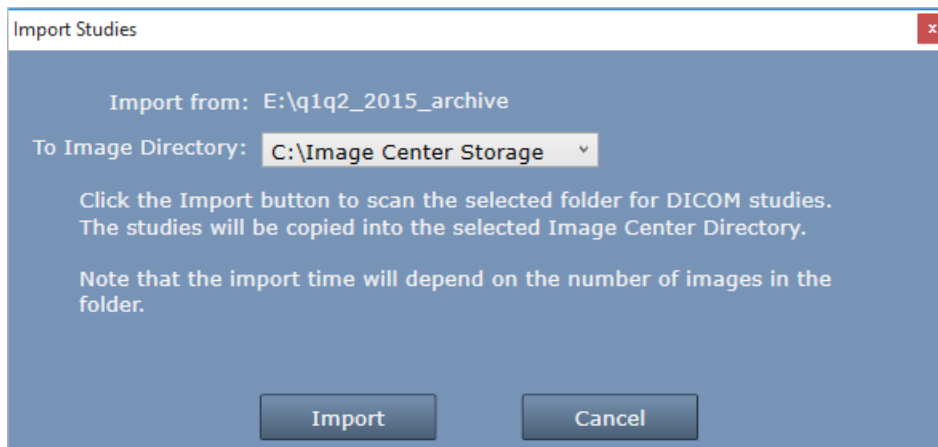
2. Click the **Import** button in the lower left corner:



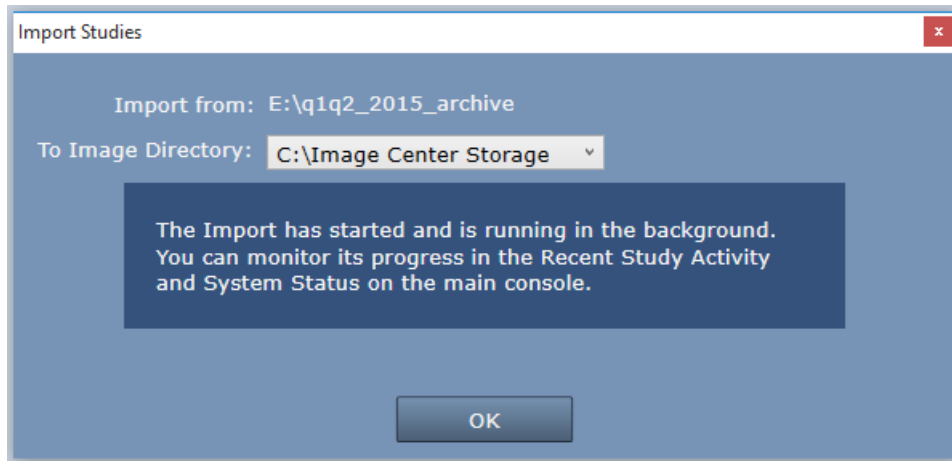
3. A folder Browser will appear:



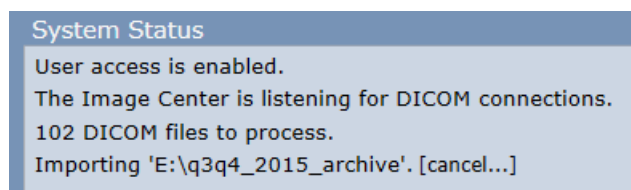
4. Select the folder of data that you want to import and. If you need to access a network share, you can enter its UNC location in the **Folder:** text box.
5. Click OK. An Image Directory selection dialog will appear:



6. Select the Image Directory you want to import the DICOM files into and click the **Import** button.
7. The following confirmation will appear.



8. Click OK.
9. Check the **Recent Study Activity** window in the Console. You should see patient studies appearing there.
10. Go look at the System Status window on the main console. If it's a small folder, it may already have finished importing, but if you have a larger folder, you will likely see something like this:



11. The Import operation is running in the Image Center services in the background. You can close the Console if you need. If you want to cancel the import, just click [cancel...].
12. Go to one of the ShowCase Premier viewers you configured earlier, and click on the Image Center tab. Search for one of the patients you just imported. It should be there.
13. Sample more studies until you are satisfied that the entire contents of the folder has been properly imported.
14. Repeat this for every archive folder you have.

**Note:** When you click the Import button, it will scan all of the files in the folder and in all subfolders, whether they are DICOM files or not, and import every DICOM file it can find. It ignores DICOMDIR files. This can take quite some time, and is very much dependent on the speed of your disk or in the case of a network share, the speed of your network. It runs in the background so you don't have to babysit the operation.

If you accidentally import the same study twice, don't worry – the Image Center will figure that out and overwrite the first instance of the study with the second. "Same study" to the Image Center means the study has the same DICOM Study UID.

**Tips:** The Import button will import *all* studies in the folder or drive you selected. So if you have your archives under one drive or under one folder, you can import the whole thing all at once.