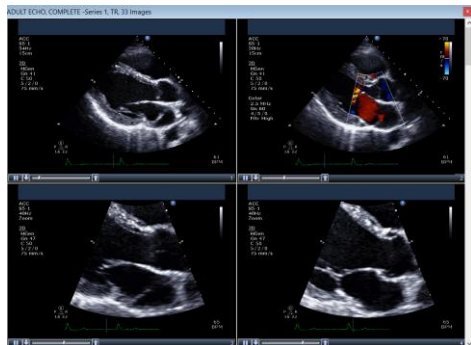


# ShowCase® DICOM Image Viewing Solutions



by Trillium Technology, Inc.

**Affordable, scalable imaging solutions** for Cardiology, Vascular, Obstetric, Emergency Medicine, General Imaging



**Diagnostic quality study viewing, de-identification tools and presentation tools** ...with our affordable ShowCase Basic viewer

**Inexpensive small practice study storage and review**

... with ShowCase Image Center and ShowCase Premier installed on a single PC.

**Multi-Clinic study storage and review (stores more than 200,000 studies)**

... with our scalable Image Center networked with ShowCase Premier viewers.

**Remote viewing**

... with Image Center & ShowCase Premier or ShowCase Viewer for iPad.

**Studies from PACS**

... with the Connect add-on for either ShowCase Basic or Premier.

**iPad study review**

... with Image Center and our Viewer for iPad.

## Viewer Features

### Display

	Basic	Premier
Display Images	✓	✓
Play Clips (Cine)	✓	✓
Margin Clips	✓	✓
Single Step Clip Playback	✓	✓
Clip Speed Control	✓	✓
Contrast/Brightness	✓	✓
Display Ultrasound DICOM Structured Reports	✓	✓
Compare Studies Side By Side	✓	✓
Stress Echo Display by Stage or View	✓	✓
Intravascular Ultrasound Display	✓	✓

### Presentation

Instant export into PowerPoint	✓	✓
DICOM Clip playback in PowerPoint*	✓	✓
Erase Patient Information burned into Images	✓	✓
Anonymize Patient Information in DICOM files	✓	✓
Print reference images to desktop printers	✓	✓
Image Annotation	✓	✓

### Measurement Tools

Distance Tool		✓
Free Form ROI Tool		✓
Ellipse Area Tool		✓
Doppler Line Tool		✓
Doppler Trace Tool		✓
M-Mode Line Tool		✓

### Connectivity

Access Image Center Studies		✓
Query/Retrieve DICOM from PACS	option	option

### Export

Export Images to .bmp, .tiff, .jpg	✓	✓
Export Clips to .avi	✓	✓
Export Stress Echo Display to .avi	✓	✓
CD/DVD Burning		✓
Embedded onboard viewer for CD/DVD		✓

## Want to learn more?

Visit <http://www.triltech.com> for details, or send an inquiry to [sales@triltech.com](mailto:sales@triltech.com).