



ShowCase Image Viewing Keyboard Controls

Setting Preferences: You can set a default image size using the menu item Edit: Preferences. The Preferences dialog also lets you decide what tools to display when you double-click on an image and whether to auto-play clips.

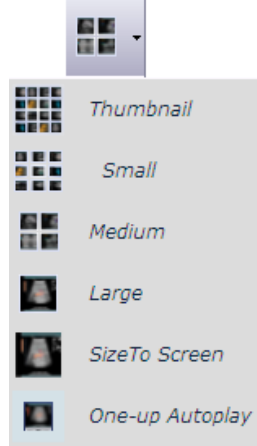
Useful Keyboard Controls for Image Viewing

Key(s)	Action
Scroll wheel	Use the scroll wheel on your mouse to scroll thru the images in a series, or thru the list of studies in a study list.
Right-click	Start/stop a clip playback
Double-click	Open the full size image window and access brightness & contrast, annotation tools, paint-out tools and image measurement tools.
Ctrl-A	Select All images
Ctrl-O	Open Directories Window to select a new study
Ctrl-P	Print the current series of images
F7	Move to the next image display size (cycles thru all sizes thumbnail to full screen)
F9	Toggle to/from "one-up auto-play" mode
Pg Up	Scroll to the previous screen of images
Pg Down	Scroll to the next screen of images
Home	Scroll to the first image in the series
End	Scroll to the last image in the series
↑ (up arrow)	Scroll up one row of images
↓ (down arrow)	Scroll down one row of images

Image Sizes

To change the size and layout of the displayed images you can do any of the following:

- Select the menu item Series-> Change Image Size/ Presentation
- Press F7 to cycle thru all of the sizes
- Use the toolbar dropdown menu: Click on the viewing size button once to move to the next size. Or select a size from the drop-down list.
- If you are viewing a stress echo study, the list will include By Stage and By View. An IVUS study includes ILD Display.



Brightness & Contrast



Double-click on an image and if necessary, select the 'Contrast/Brightness' tab to readjust the window, level, or gamma correction as needed. If you export an image as an AVI or BMP file, the exported image will keep the contrast settings. To apply the same settings to all images in the series, check the "Apply to All" button. Apply to All

Playing Clips



You can stop and start clips by right clicking on the clip. This may be easier than using the start /stop button on the controller below the clip. When the clip is stopped, you can use the "slider" to position the clip to a specific frame:

When the clip is playing the up and down arrows on the clip controller will speed up and slow down the clip:



You can reset the frame rate or margin a clip to a specific set of frames by double-clicking on the clip and using the margin and frame rate controls on the clip controller:



Measuring, cropping, annotating, exporting in consumer formats

Double-click on an image to access tools for making measurements, annotating, cropping, exporting as BMP, AVI, and other formats.